



ISLANDS TRUST AREA GROUNDWATER SUSTAINABILITY SCIENCE PROGRAM

Bowen Island
BIM Council Meeting Delegation
December 11 2023

William Shulba, P.Geo
Senior Freshwater Specialist
freshwater@islandstrust.bc.ca



ISLANDS TRUST STEWARDSHIP EDUCATION SPEAKER SERIES

Webinar #1

Freshwater Sustainability Strategy and
Online Freshwater Atlas

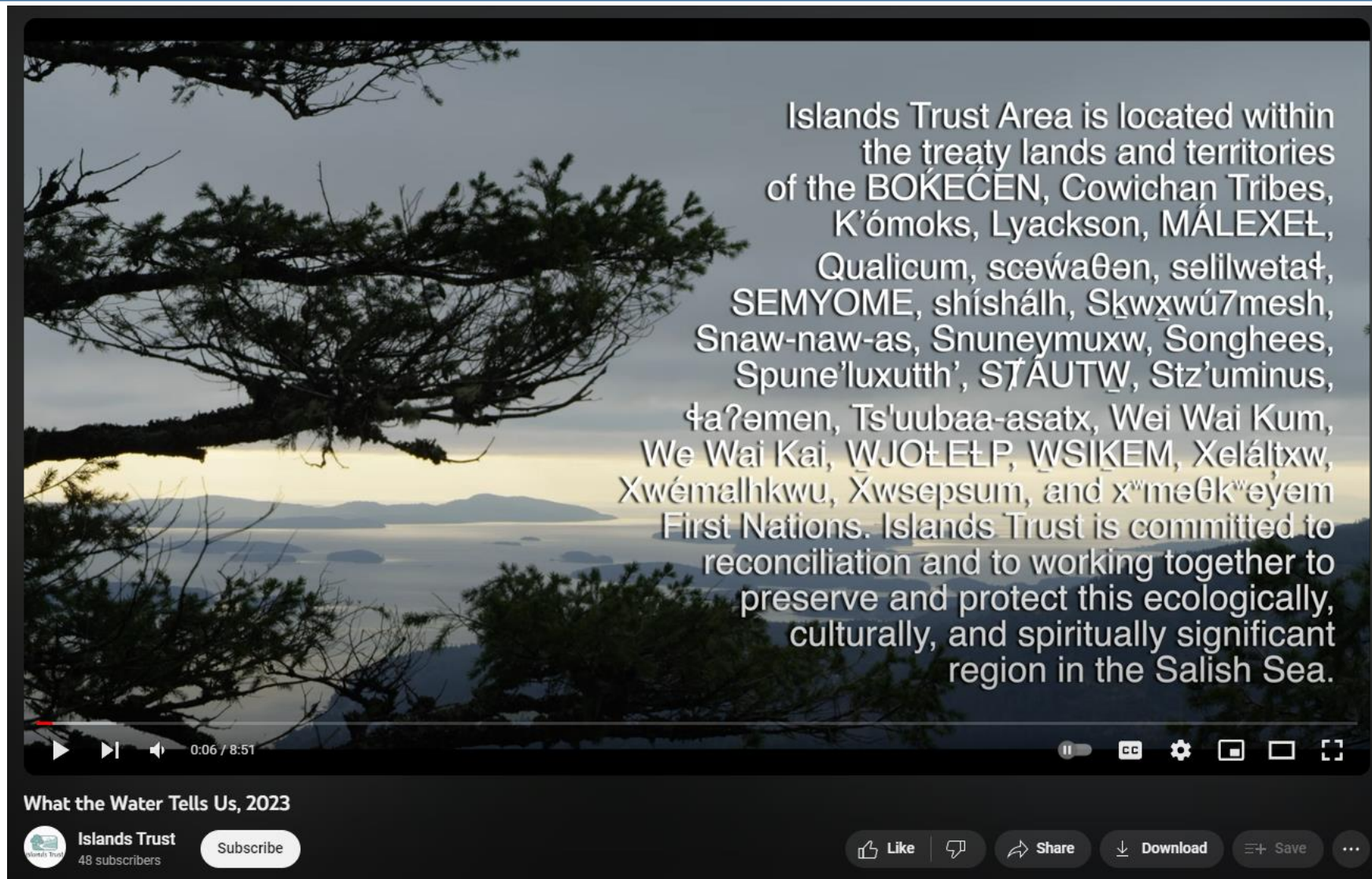
January 2024

Webinar #2

Wells and Our Groundwater

February 2024





Islands Trust Area is located within the treaty lands and territories of the BOKEĆEN, Cowichan Tribes, K'ómoks, Lyackson, MÁLEXEŁ, Qualicum, scə́waθən, sə́lilwətaɬ, SEMYOME, shíshálh, Skwxwú7mesh, Snaw-naw-as, Snuneymuxw, Songhees, Spune'luxutth', SṬAUTW, Stz'uminus, ɬaʔəmen, Ts'uubaa-asatx, Wei Wai Kum, We Wai Kai, WJOŁEŁP, WSIKEM, Xeláltxw, Xwémalhkwu, Xwsepsum, and x'məθk'əyəm First Nations. Islands Trust is committed to reconciliation and to working together to preserve and protect this ecologically, culturally, and spiritually significant region in the Salish Sea.

0:06 / 8:51

What the Water Tells Us, 2023

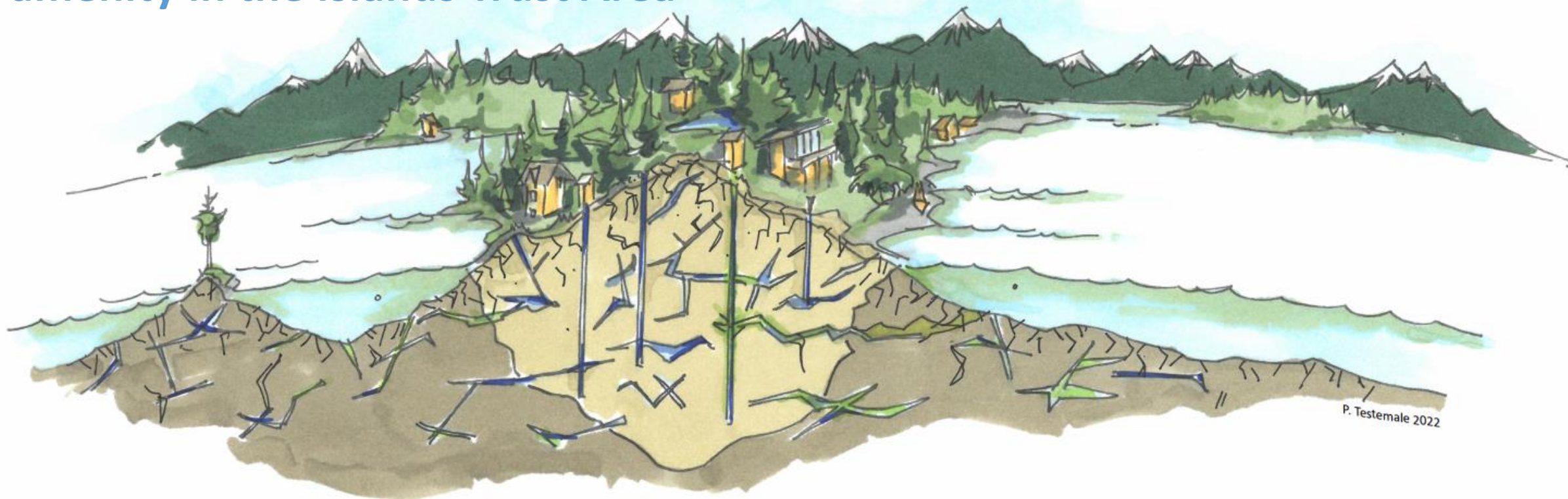
Islands Trust
48 subscribers

Subscribe

Like | Comment | Share | Download | Save

What the Water Tells Us (2023), Islands Trust

Groundwater is a unique amenity in the Islands Trust Area



All groundwater on Bowen comes from **meteoric** water. Rain, snow, and fog provide all essential freshwater for island life.



ISLANDS TRUST AREA AQUIFER CONCEPTUALIZATION PROJECT

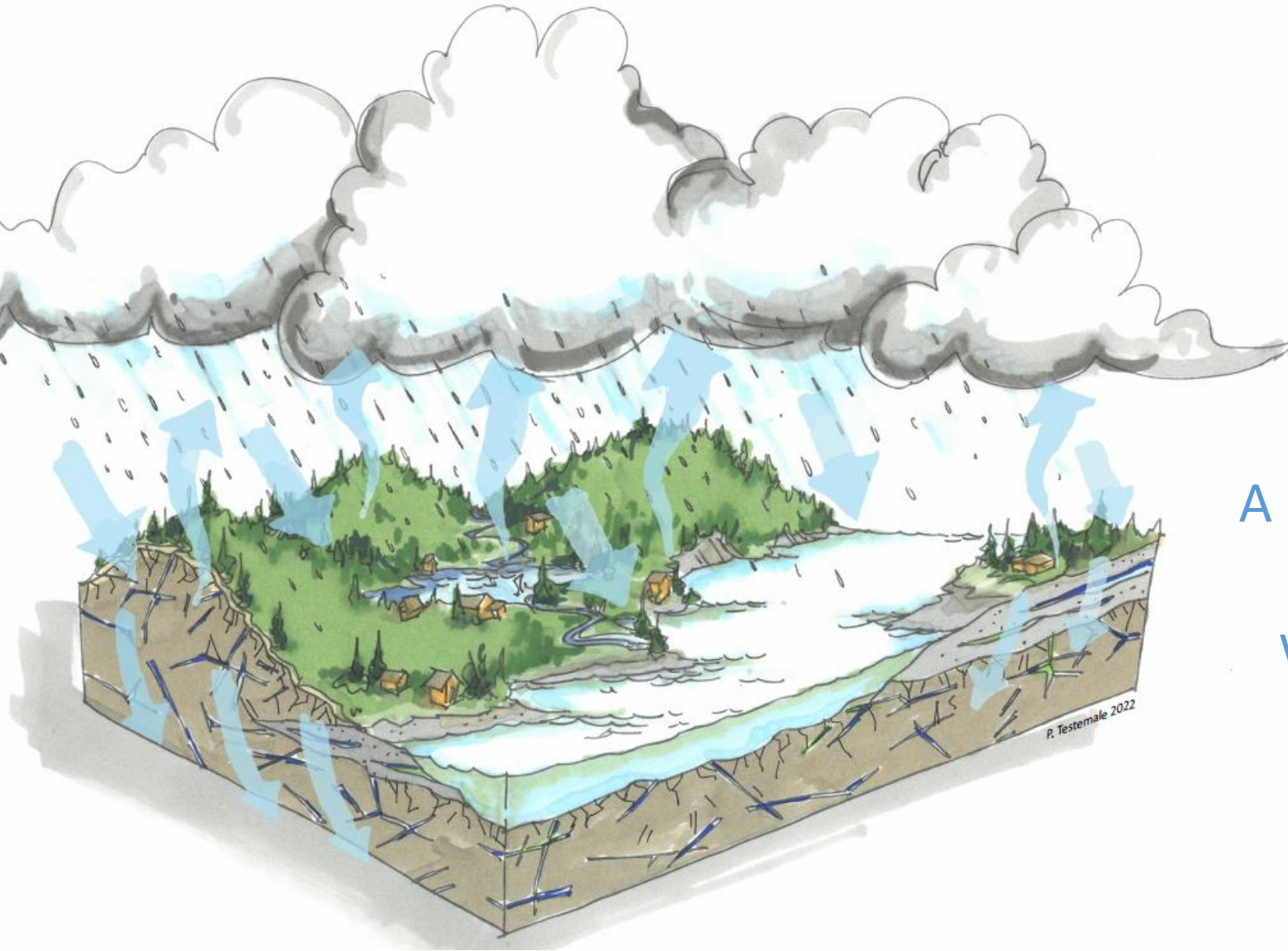
Groundwater Sustainability Science Program



Islands Trust

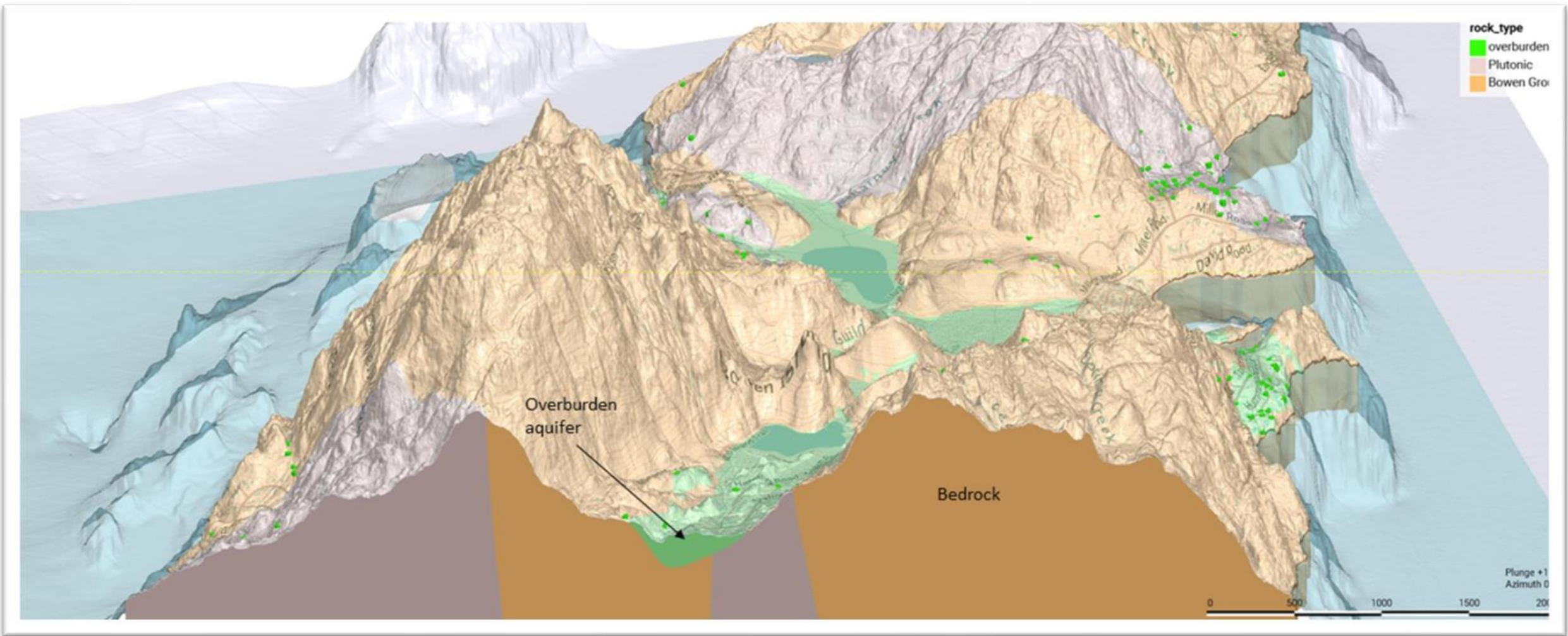


What is an Aquifer?



A subterranean geological unit that can store and transmit water in useful quantities for domestic, industrial, and ecological use.







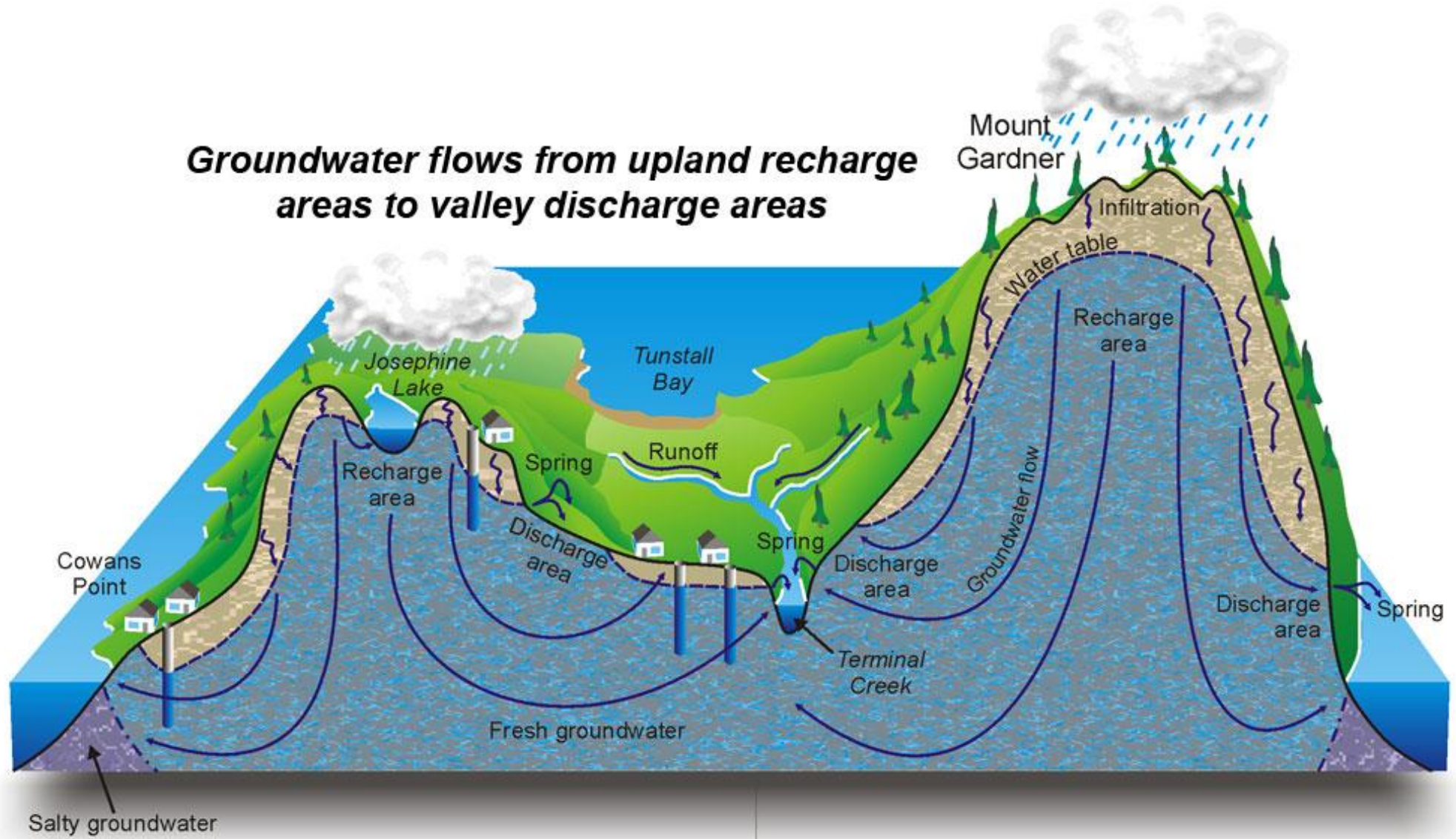
ISLANDS TRUST AREA GROUNDWATER RECHARGE MAPPING PROJECT

Groundwater Sustainability Science Program



Islands Trust



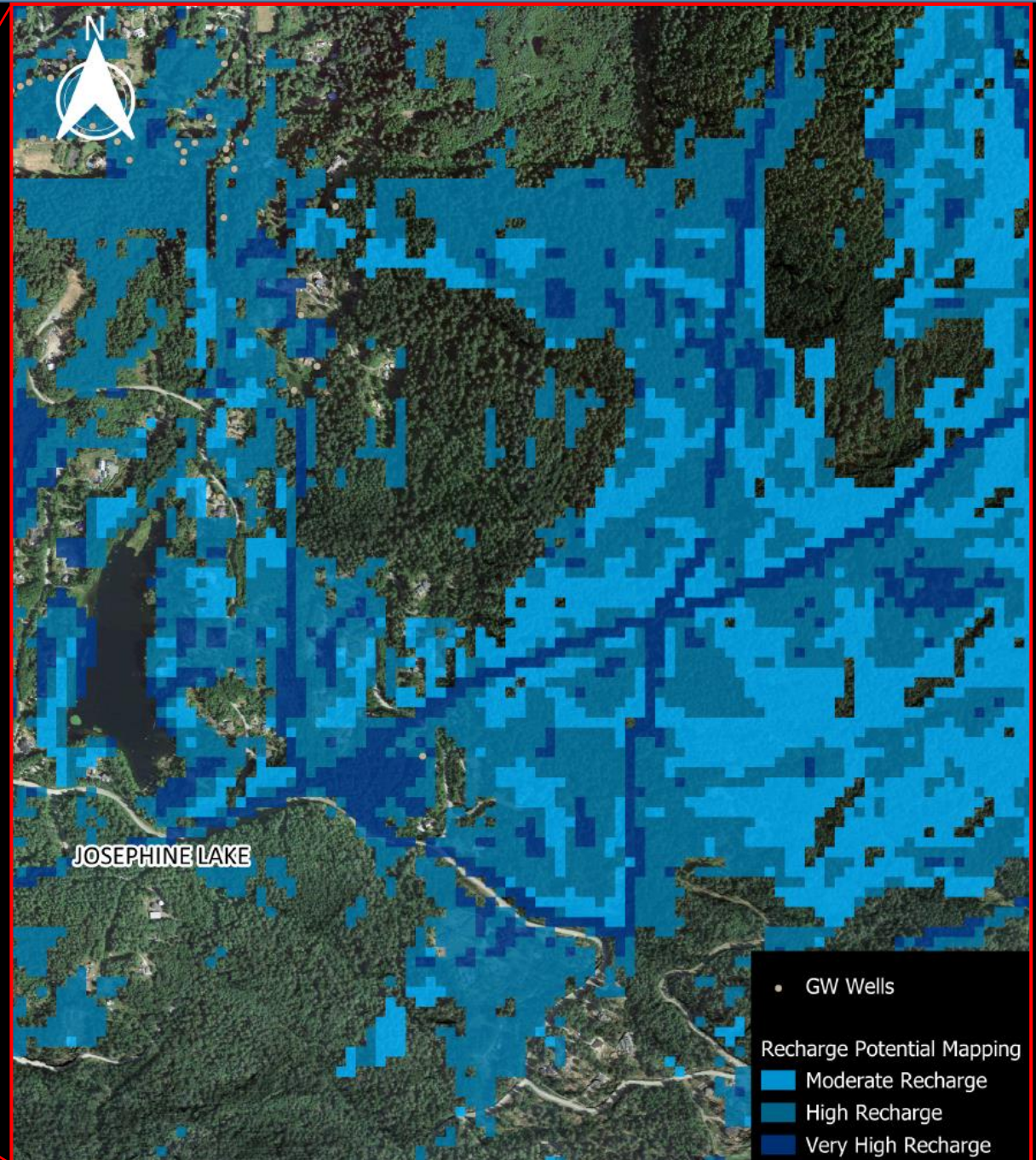




Ecosystem role in groundwater recharge potential considered.



- GW Wells
- Recharge Potential Mapping
 - Moderate Recharge
 - High Recharge
 - Very High Recharge

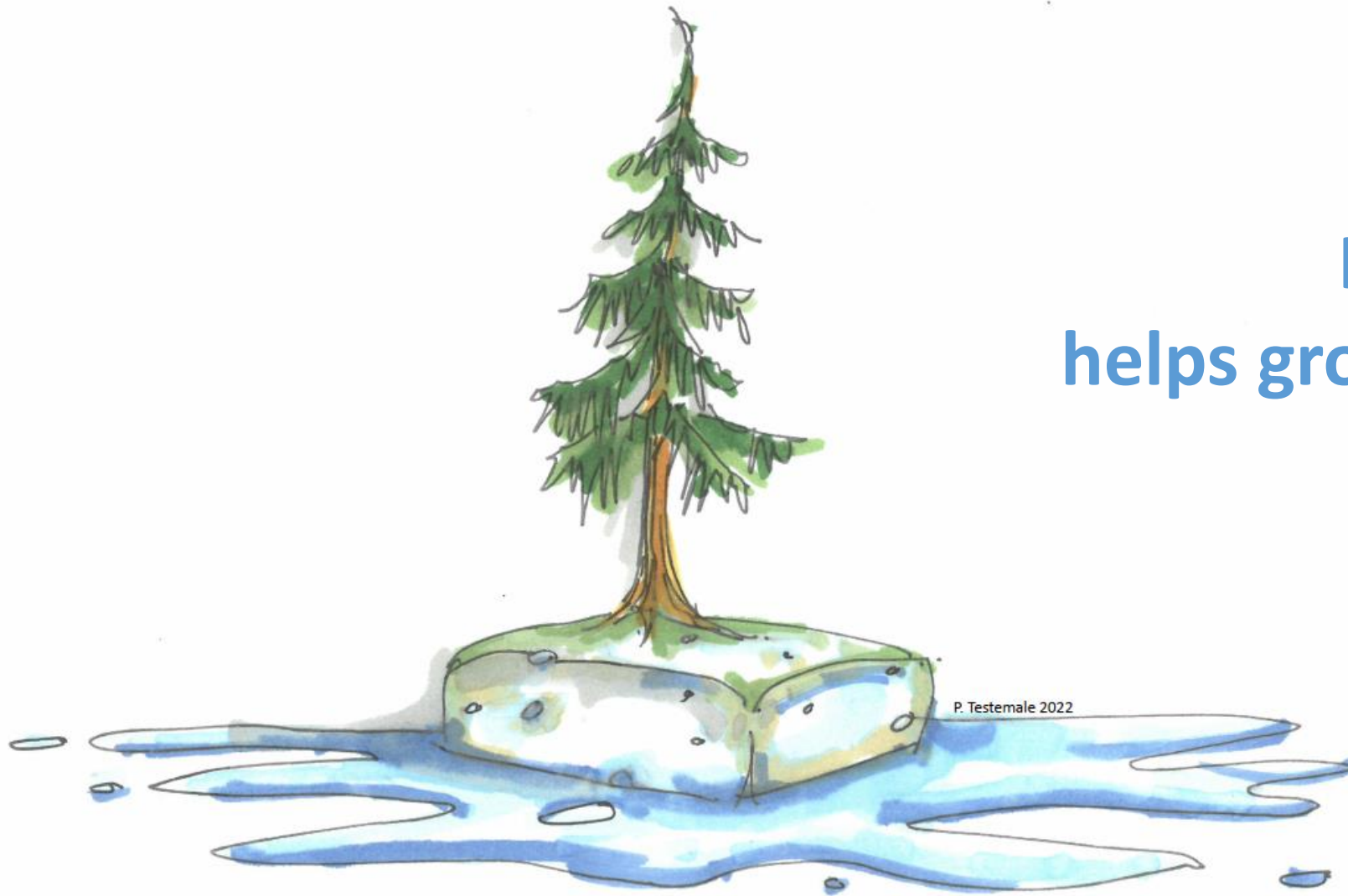


- GW Wells
- Recharge Potential Mapping
 - Moderate Recharge
 - High Recharge
 - Very High Recharge



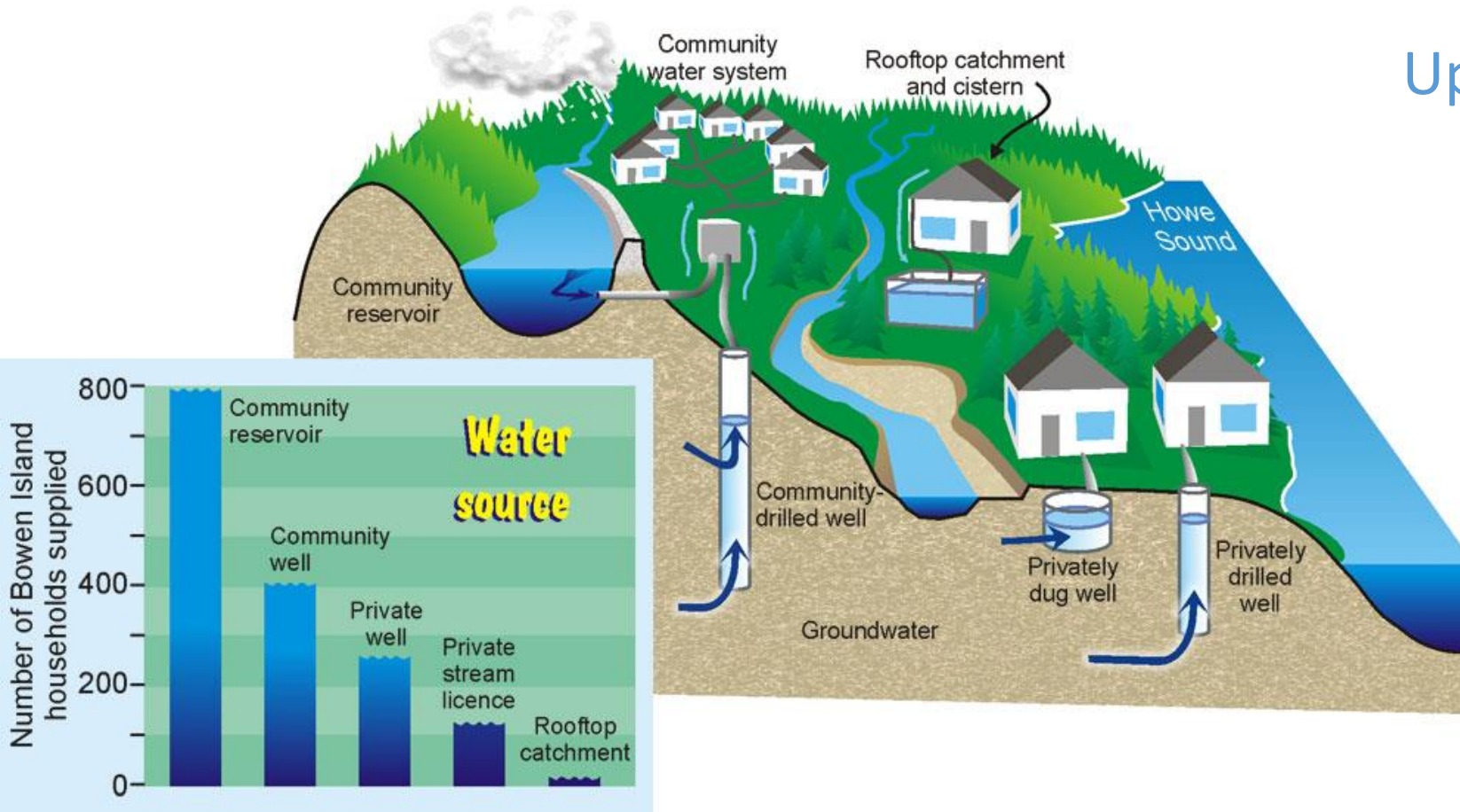
Protect Groundwater Recharge To Preserve Aquifer Health

**Healthy watersheds
helps groundwater recharge**



Next Steps for Freshwater Sustainability Planning:

- Protect Critical Recharge Areas
- Determine Water Balance
- Update Water Allocation Plan
- Coordinate with partners



Water

it's more than a symbol or a metaphor.

This is 10,000 YEARS of KNOWING.

our CREEKS and RIVERS allow us to HAVE SPIRITUAL BATHS...

To HEAL OURSELVES.



IT TEACHES ABOUT PATIENCE, RESPECT, DEATH AND BIRTH

WE ARE INTERCONNECTED WITH LAND, AIR & WATER.

WE COME FROM THE WATER...

RIVERS ARE THE VEINS OF MOTHER EARTH.

WE NEED A BRIDGE OF UNDERSTANDING THAT INCLUDES OUR SACRED RELATIONSHIP.

WE HEAR IT IN THE WORDS AND STORIES OF OUR GRANDPARENTS



WE GET TO REST, BUT THE WATER IS ALWAYS AT WORK.

EDUCATING ABOUT THE PAST AND PRESENT... FOR THE FUTURE!
PRESERVE

it is ALIVE. & HAS A SPIRIT.

IT IS OUR GROCERY STORE, OUR PHARMACY, OUR SCHOOLS AND OUR TRANSPORT AND OUR SACRED PLACES.

IT'S NOT A RESOURCE... IT IS A RELATIONSHIP.



THERE ARE IMPACTS AT EVERY SCALE.